

Finger Lakes Community College

Emergency Action and Response Plan

Site Specific Information



Main Campus

Table of Contents

11. Site Specific Information.....	3
11.1. Building Contacts.....	3
11.2. Emergency Responders	3
11.3. Evacuation Route Maps.....	4
11.4. Areas of Refuge.....	23
11.5. Assembly Areas.....	27

11. Site Specific Information

11.1. Building Contacts

Role	Position or Name	Office Phone
Plan Administrator	Matthew McGrath, FLCC Chief of Campus Police	(585)785-1437
Fire Contact	Derrick Smith, FLCC Assistant Chief of Campus Police	(585) 785-1471
EHS & Facilities Contact	Catherine Ahern, Director of Facilities	(585) 785-1273

11.2. Emergency Responders

Only trained emergency responders are assigned to perform medical or rescue duties. No other employees are assigned to perform medical or rescue duties during emergencies. Rescue and medical assistance for injured persons will be provided by:

- Hopewell Fire District
- Canandaigua Ambulance
- Finger Lakes Ambulance
- Campus Police
- Ontario County Sheriff
- New York State Police

First aid and defibrillation should be provided by trained persons only.

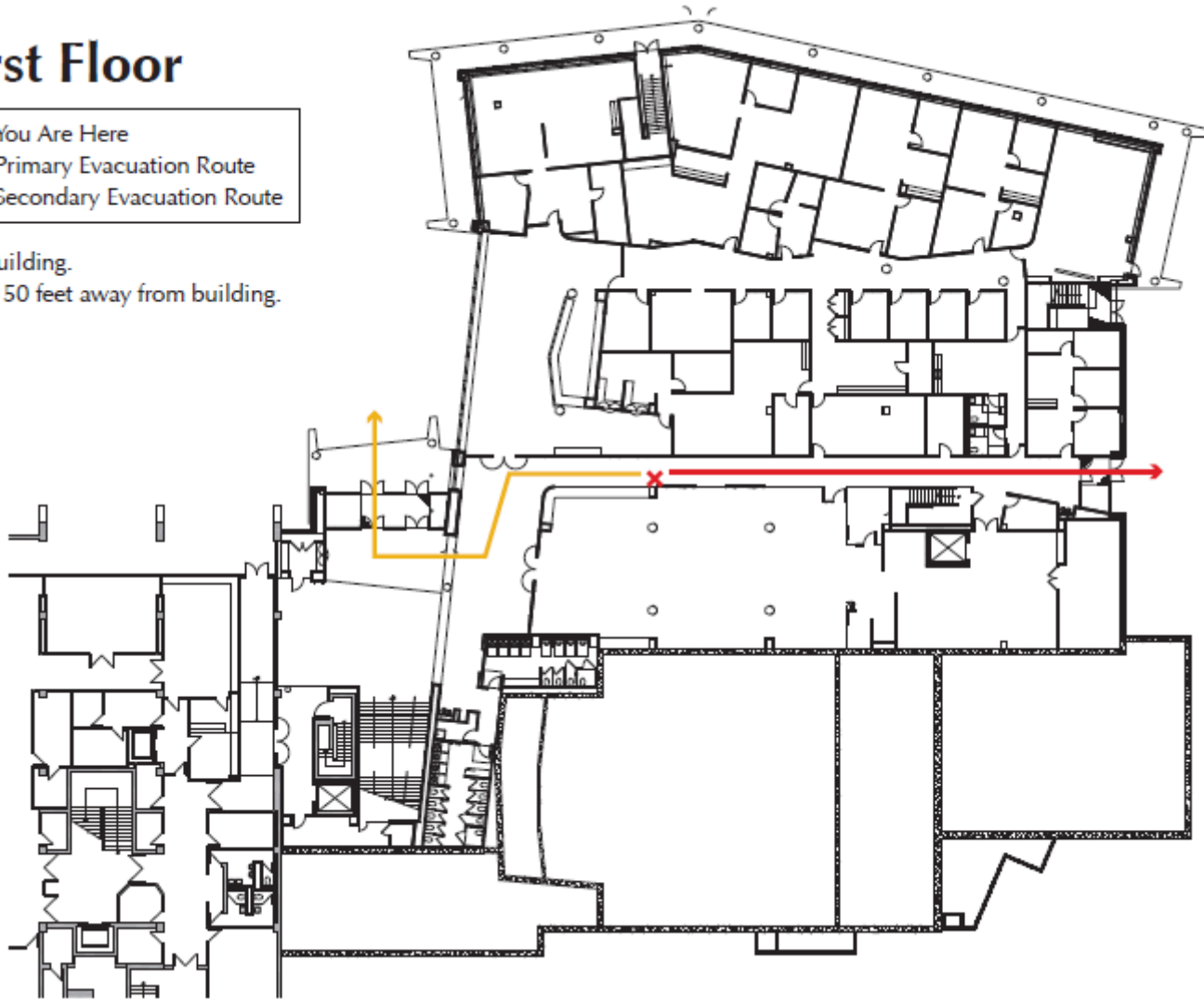
11.3. Evacuation Route Maps

Student Center Evacuation Map

First Floor

- ✗ You Are Here
- ➔ Primary Evacuation Route
- ➔ Secondary Evacuation Route

Exit building.
Move 50 feet away from building.

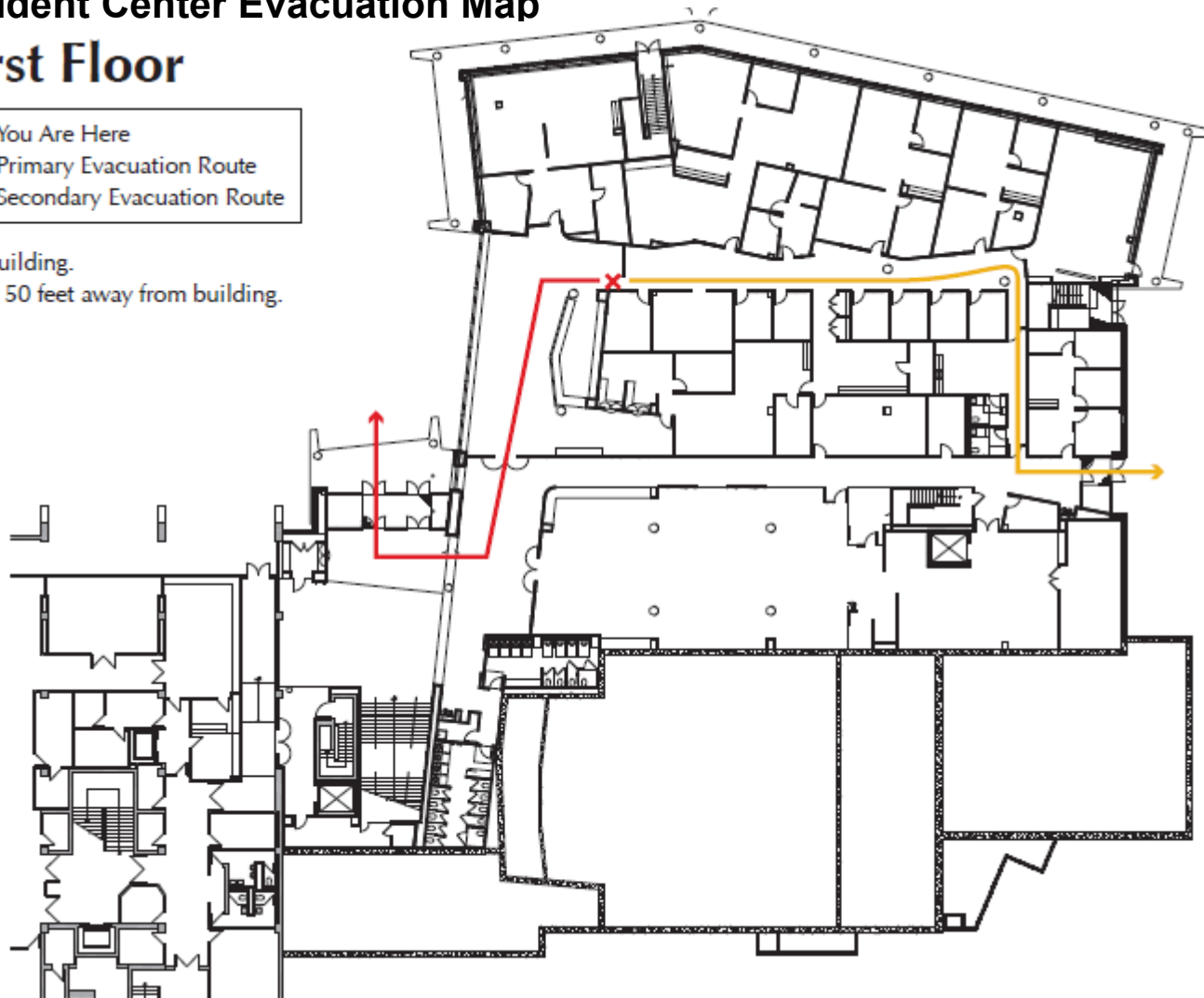


Student Center Evacuation Map

First Floor

- ✘ You Are Here
- ➔ Primary Evacuation Route
- ➔ Secondary Evacuation Route

Exit building.
Move 50 feet away from building.

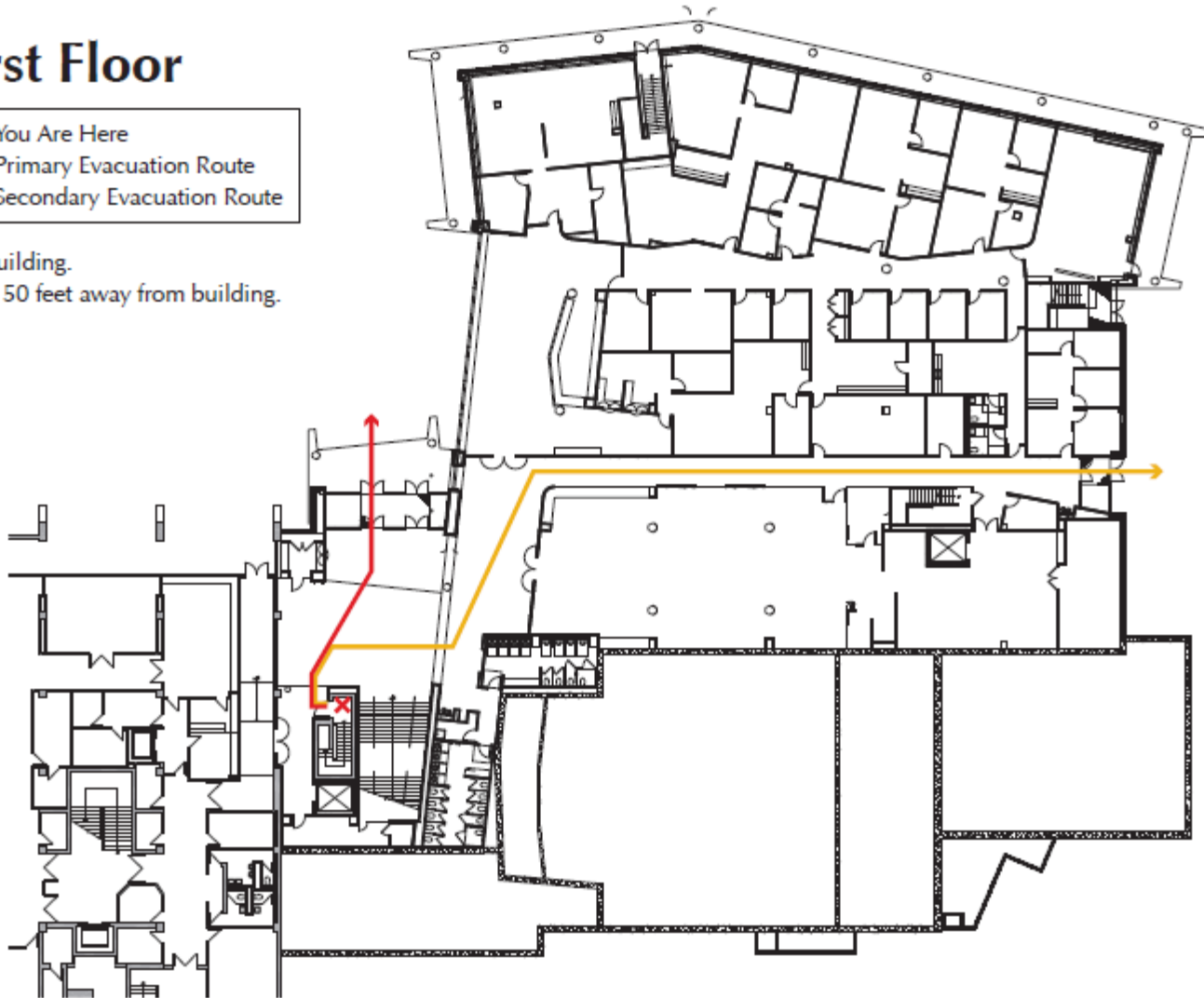


Student Center Evacuation Map

First Floor

- ✗ You Are Here
- ➔ Primary Evacuation Route
- ➔ Secondary Evacuation Route

Exit building.
Move 50 feet away from building.

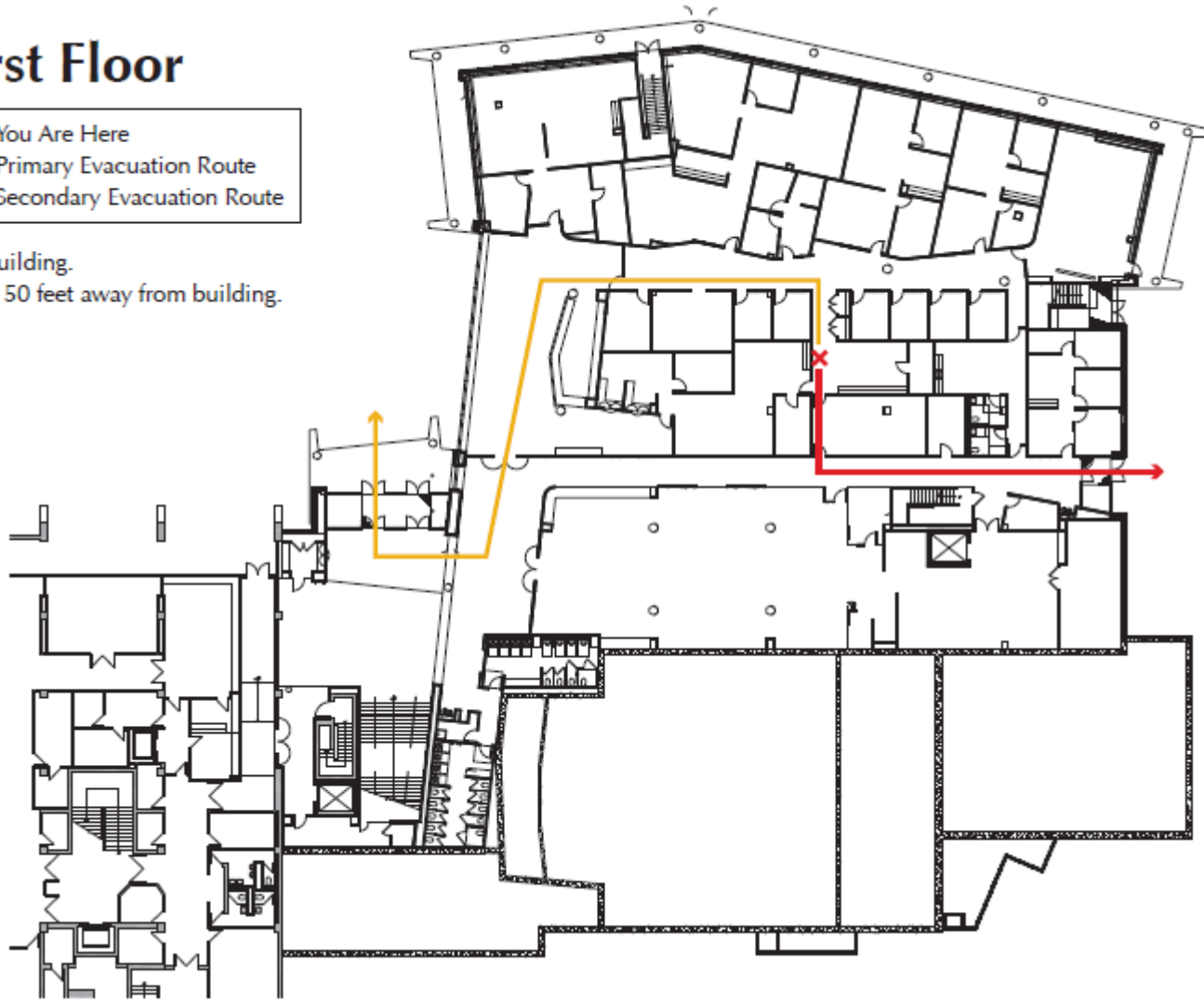


Student Center Evacuation Map

First Floor

- ✘ You Are Here
- ➔ Primary Evacuation Route
- ➔ Secondary Evacuation Route

Exit building.
Move 50 feet away from building.

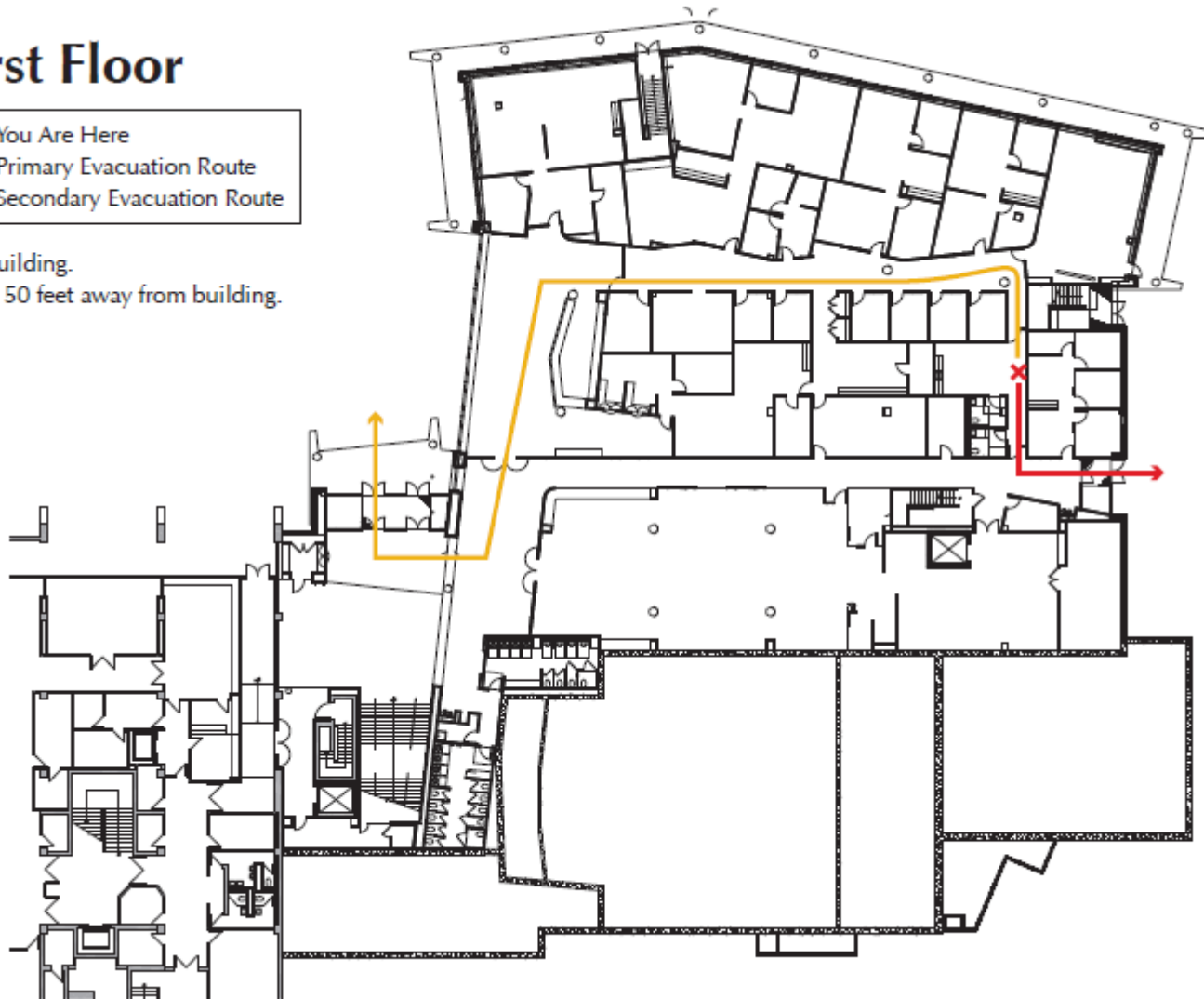


Student Center Evacuation Map

First Floor

- ✘ You Are Here
- ➔ Primary Evacuation Route
- ➔ Secondary Evacuation Route

Exit building.
Move 50 feet away from building.

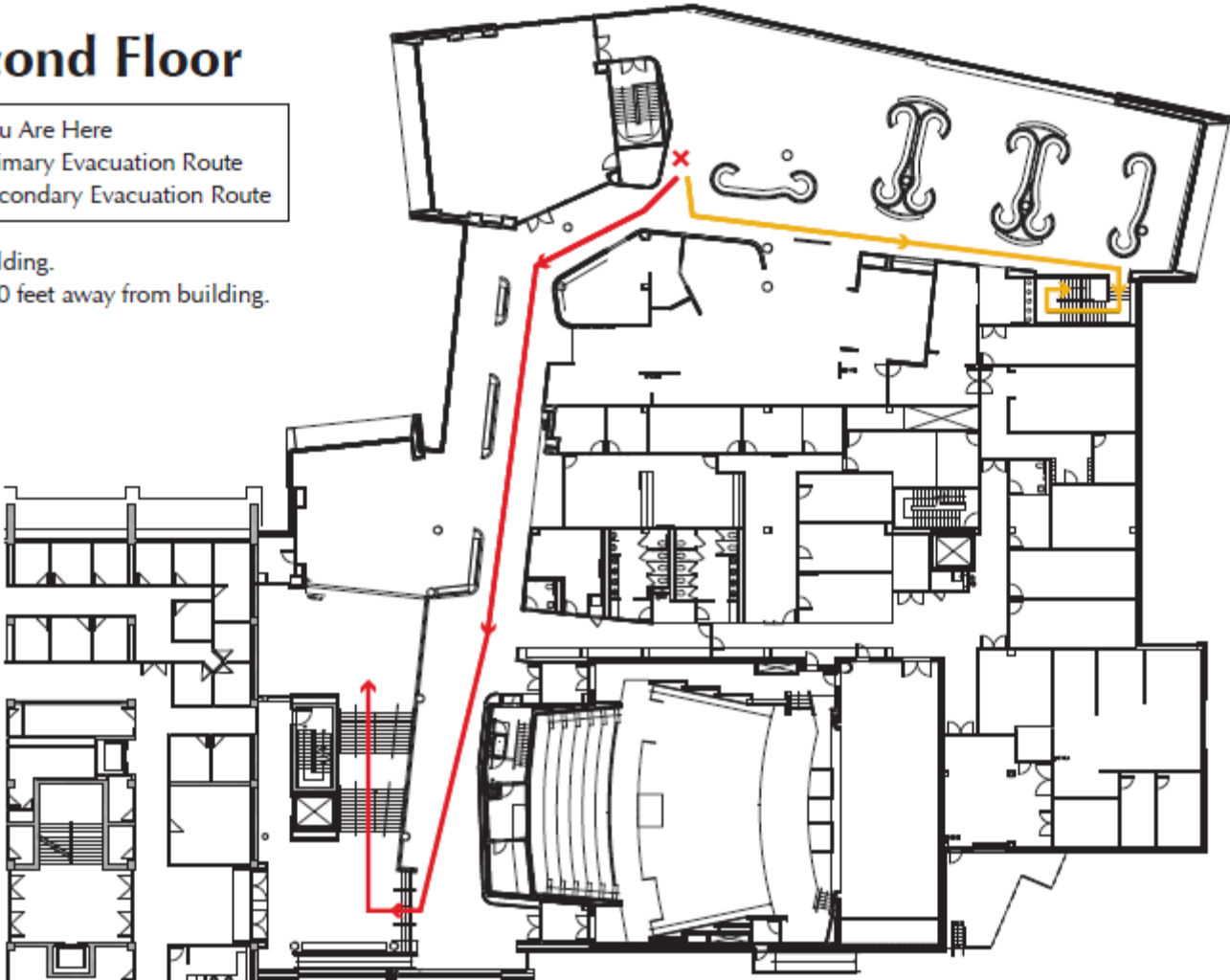


Student Center Evacuation Map

Second Floor

- ✗ You Are Here
- ➔ Primary Evacuation Route
- ➔ Secondary Evacuation Route

Exit building.
Move 50 feet away from building.

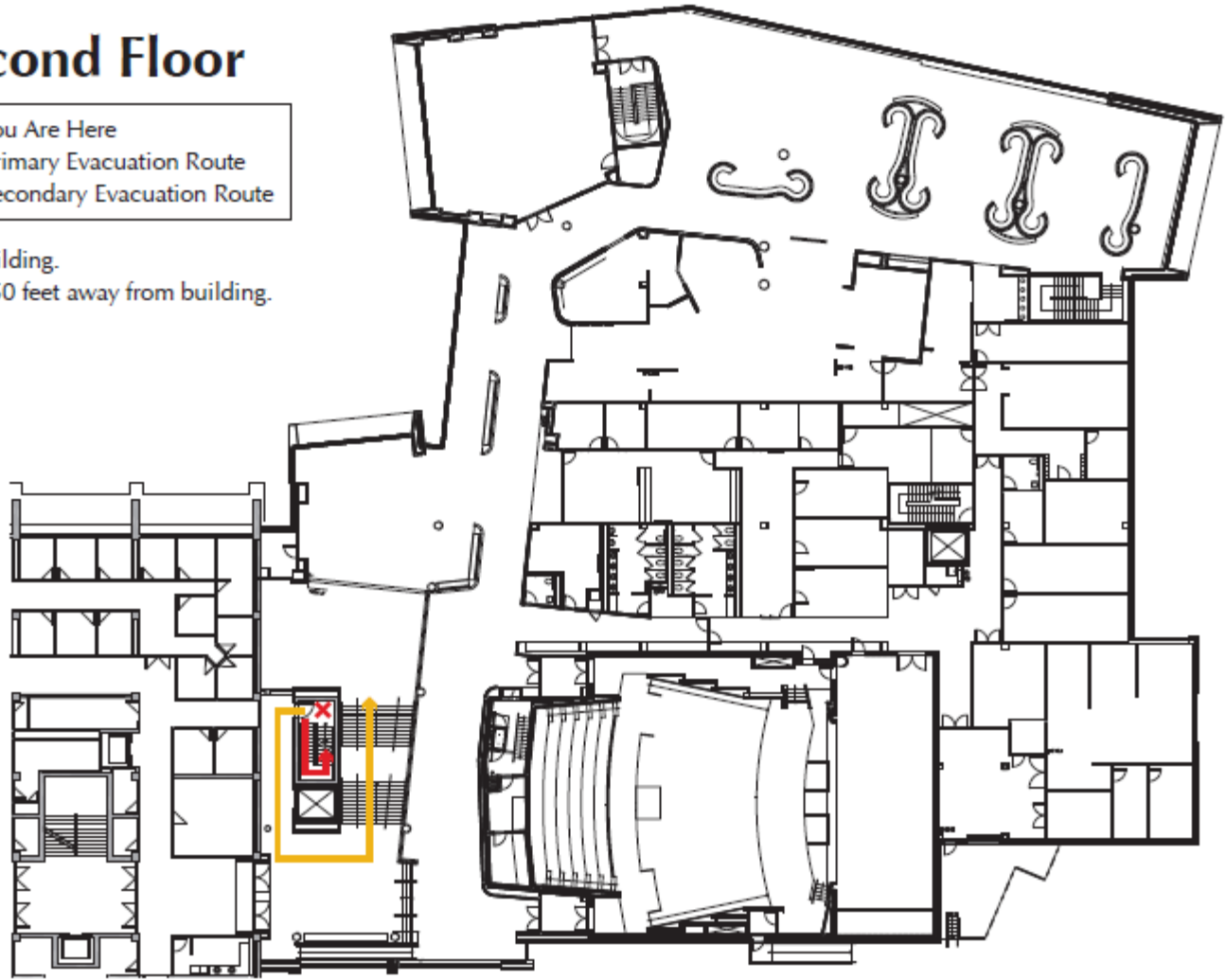


Student Center Evacuation Map

Second Floor

- ✖ You Are Here
- ➔ Primary Evacuation Route
- ➡ Secondary Evacuation Route

Exit building.
Move 50 feet away from building.

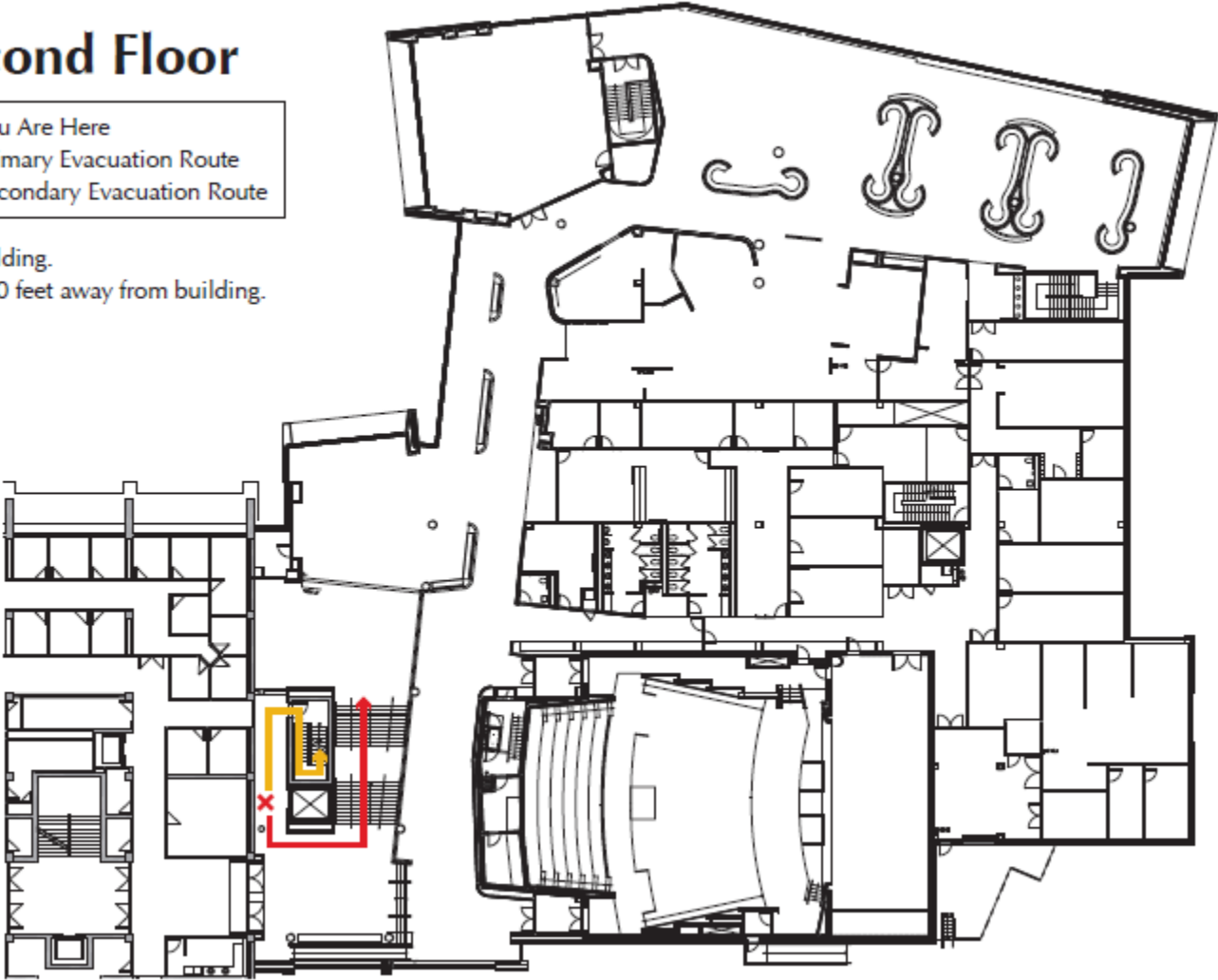


Student Center Evacuation Map

Second Floor

- ✗ You Are Here
- ➔ Primary Evacuation Route
- ➔ Secondary Evacuation Route

Exit building.
Move 50 feet away from building.

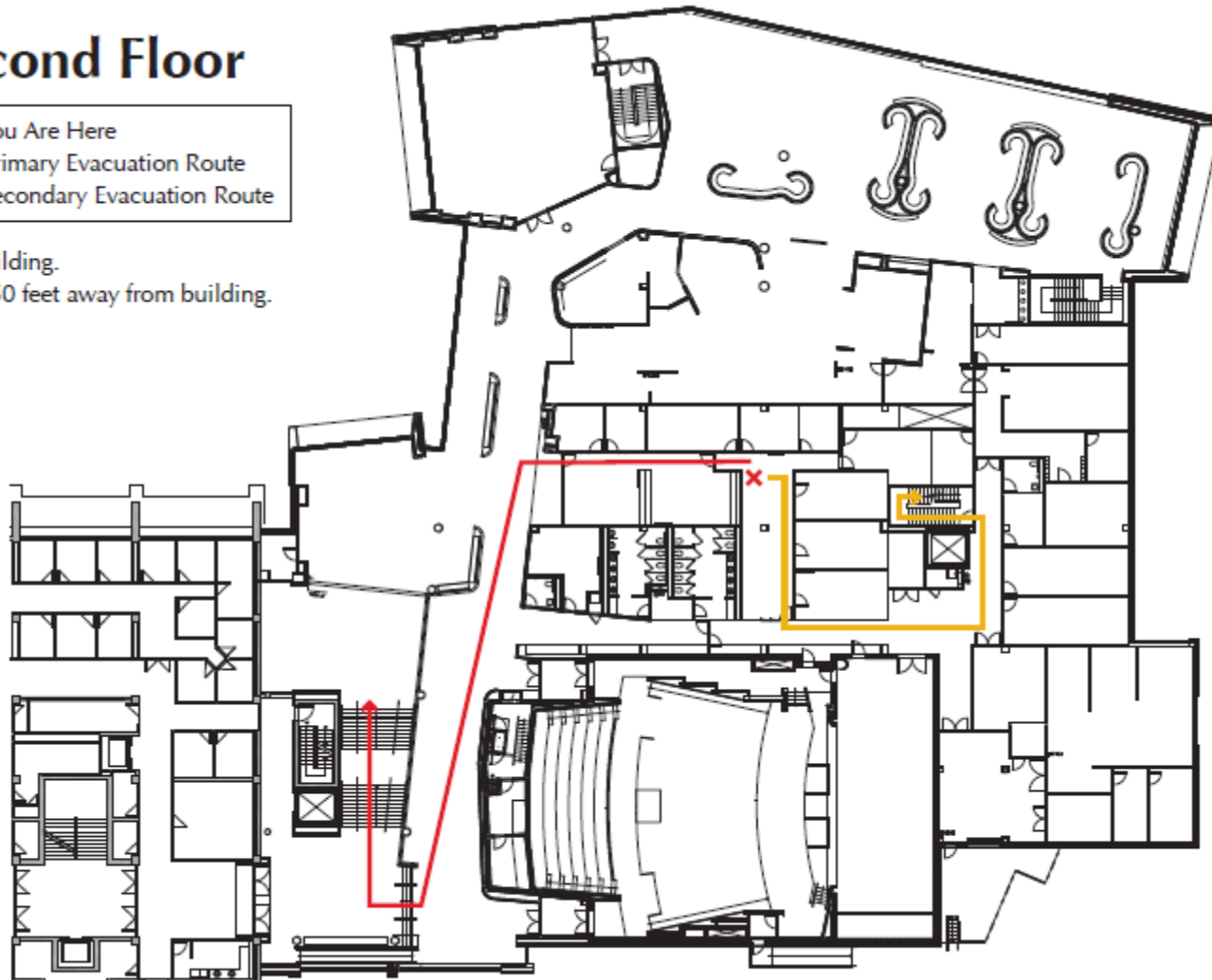


Student Center Evacuation Map

Second Floor

- ✗ You Are Here
- ➔ Primary Evacuation Route
- ➔ Secondary Evacuation Route

Exit building.
Move 50 feet away from building.

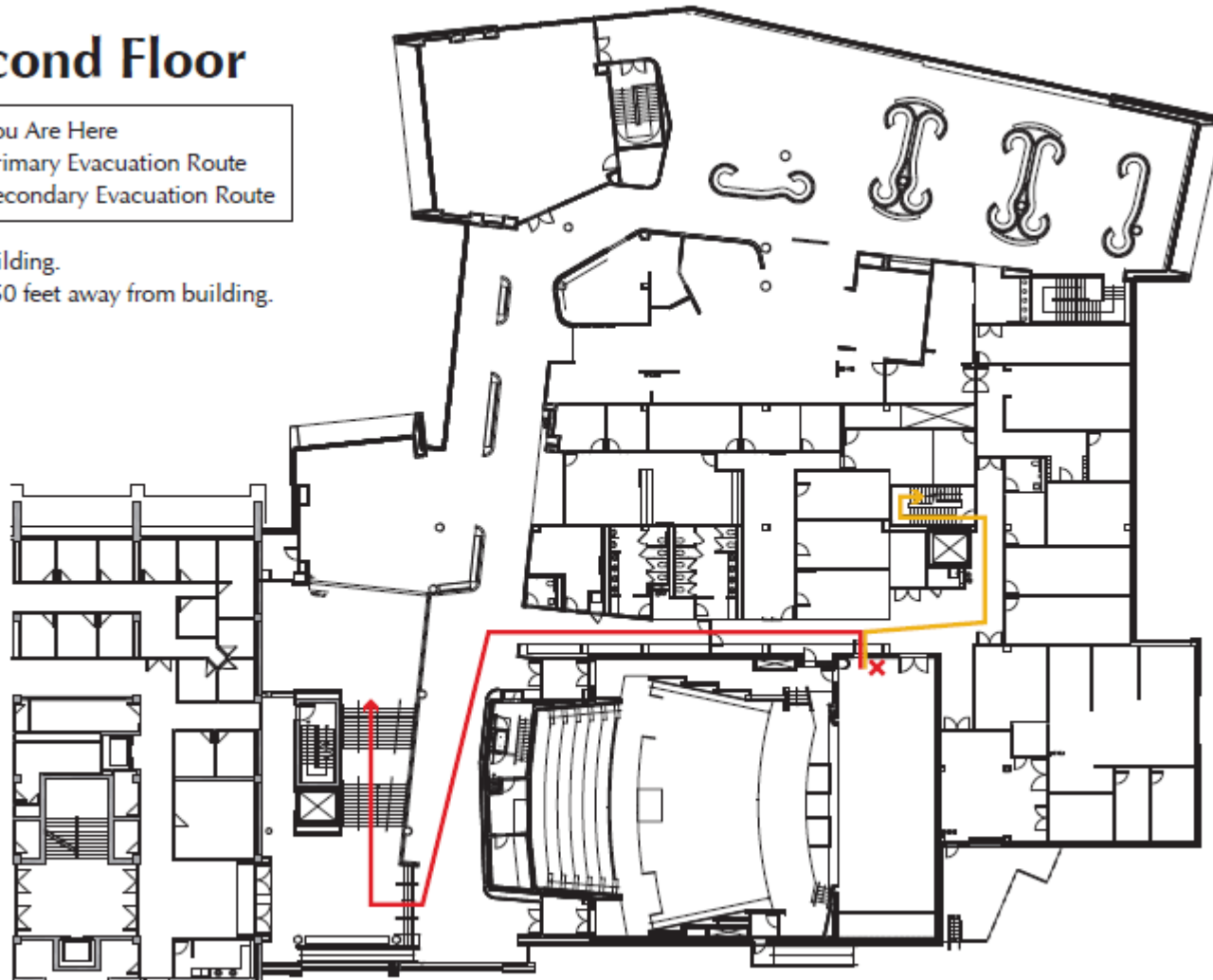


Student Center Evacuation Map

Second Floor

- ✗ You Are Here
- ➔ Primary Evacuation Route
- ➔ Secondary Evacuation Route

Exit building.
Move 50 feet away from building.

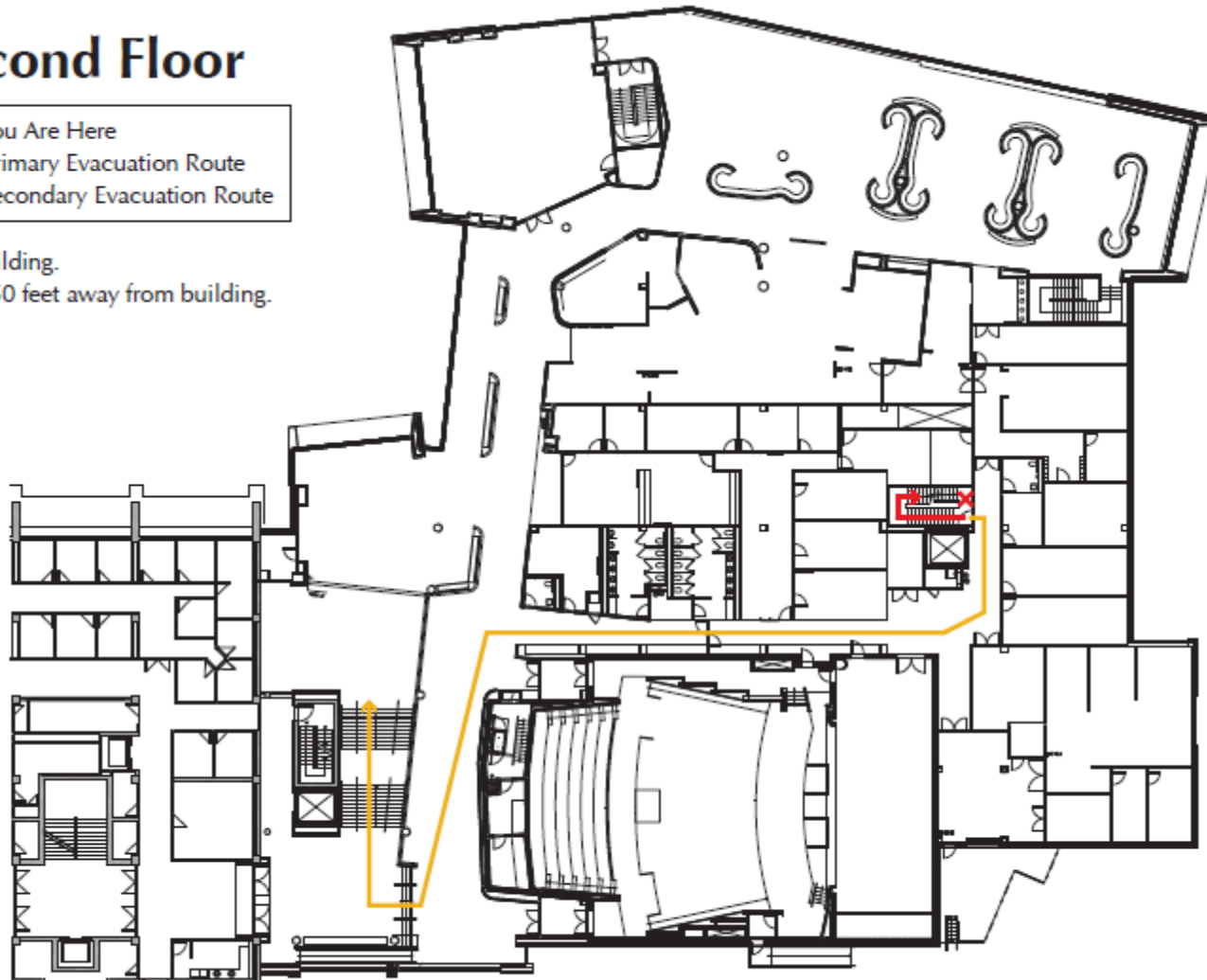


Student Center Evacuation Map

Second Floor

- ✖ You Are Here
- ➔ Primary Evacuation Route
- ➡ Secondary Evacuation Route

Exit building.
Move 50 feet away from building.

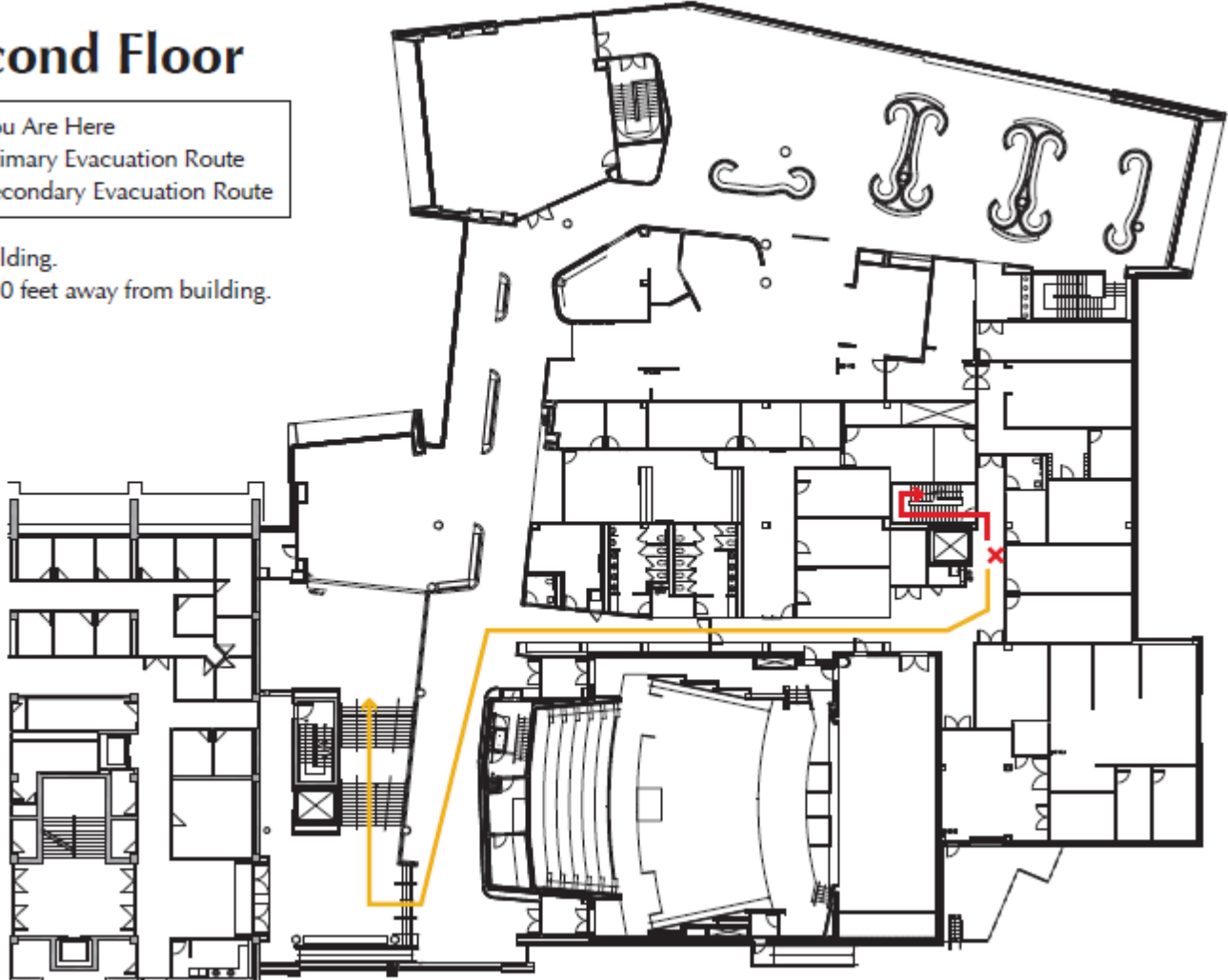


Student Center Evacuation Map

Second Floor

- ✘ You Are Here
- ➔ Primary Evacuation Route
- ➡ Secondary Evacuation Route

Exit building.
Move 50 feet away from building.

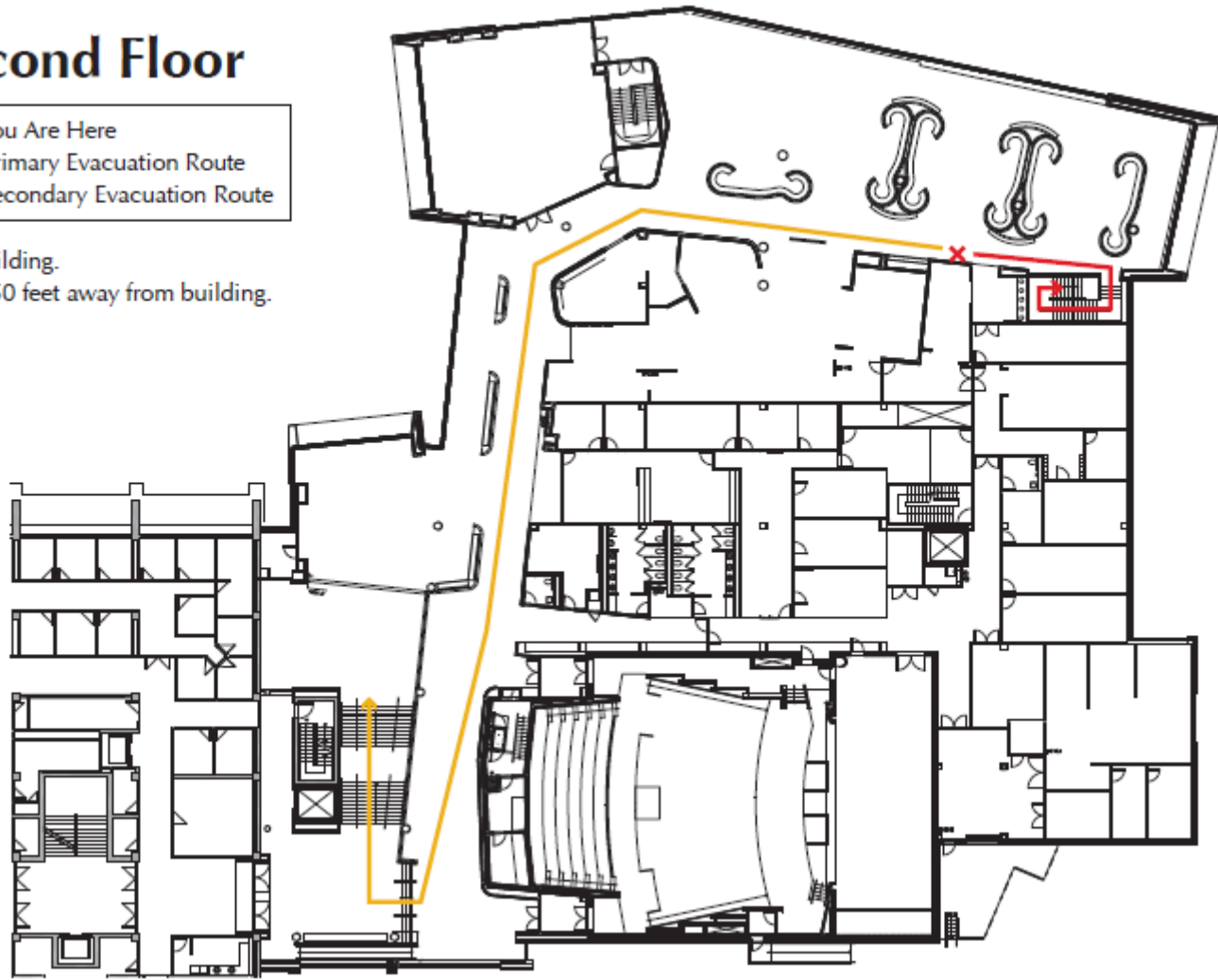


Student Center Evacuation Map

Second Floor

- ✗ You Are Here
- ➔ Primary Evacuation Route
- ➔ Secondary Evacuation Route

Exit building.
Move 50 feet away from building.

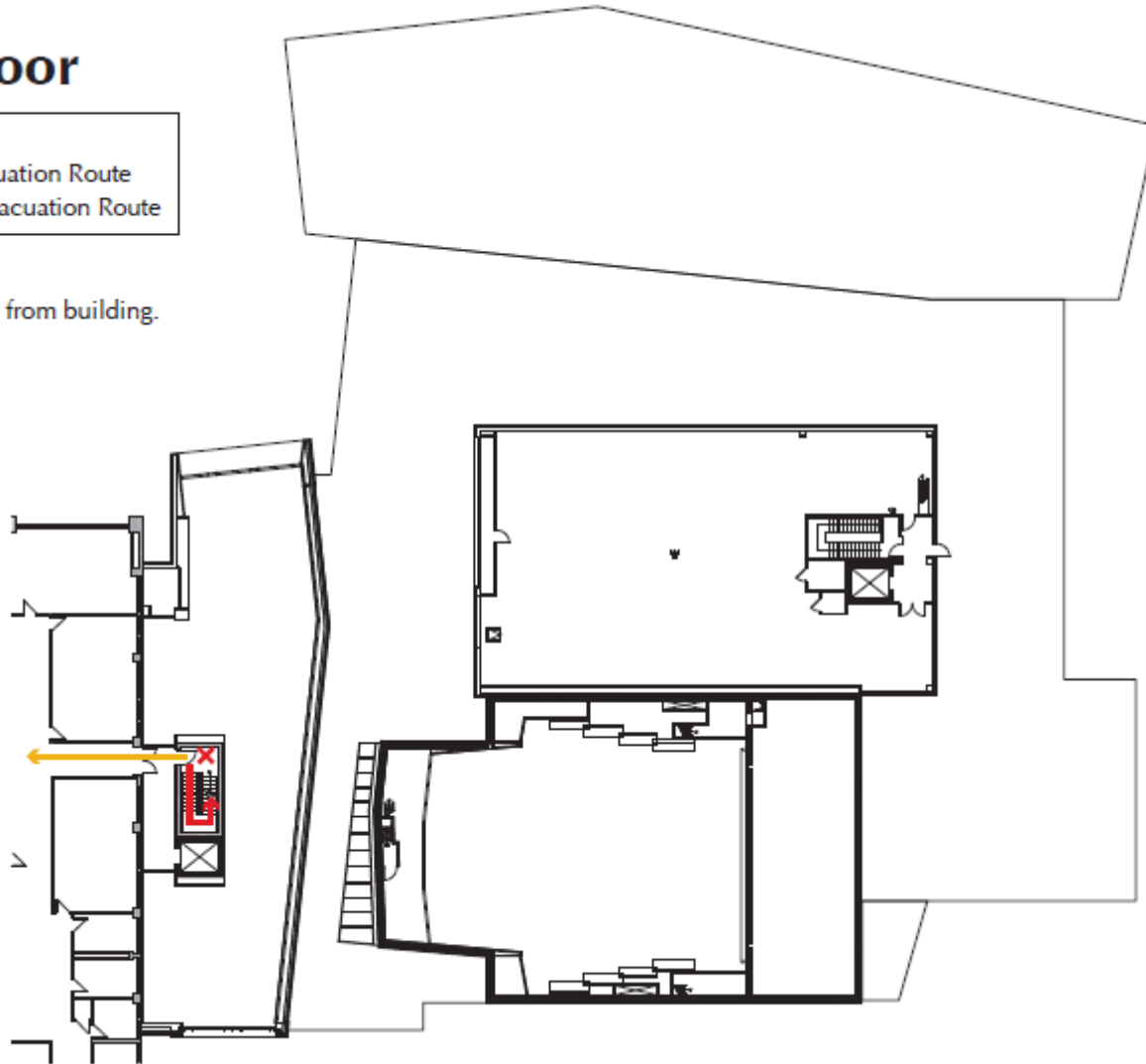


Student Center Evacuation Map

Third Floor

- ✖ You Are Here
- ➔ Primary Evacuation Route
- ➔ Secondary Evacuation Route

Exit building.
Move 50 feet away from building.

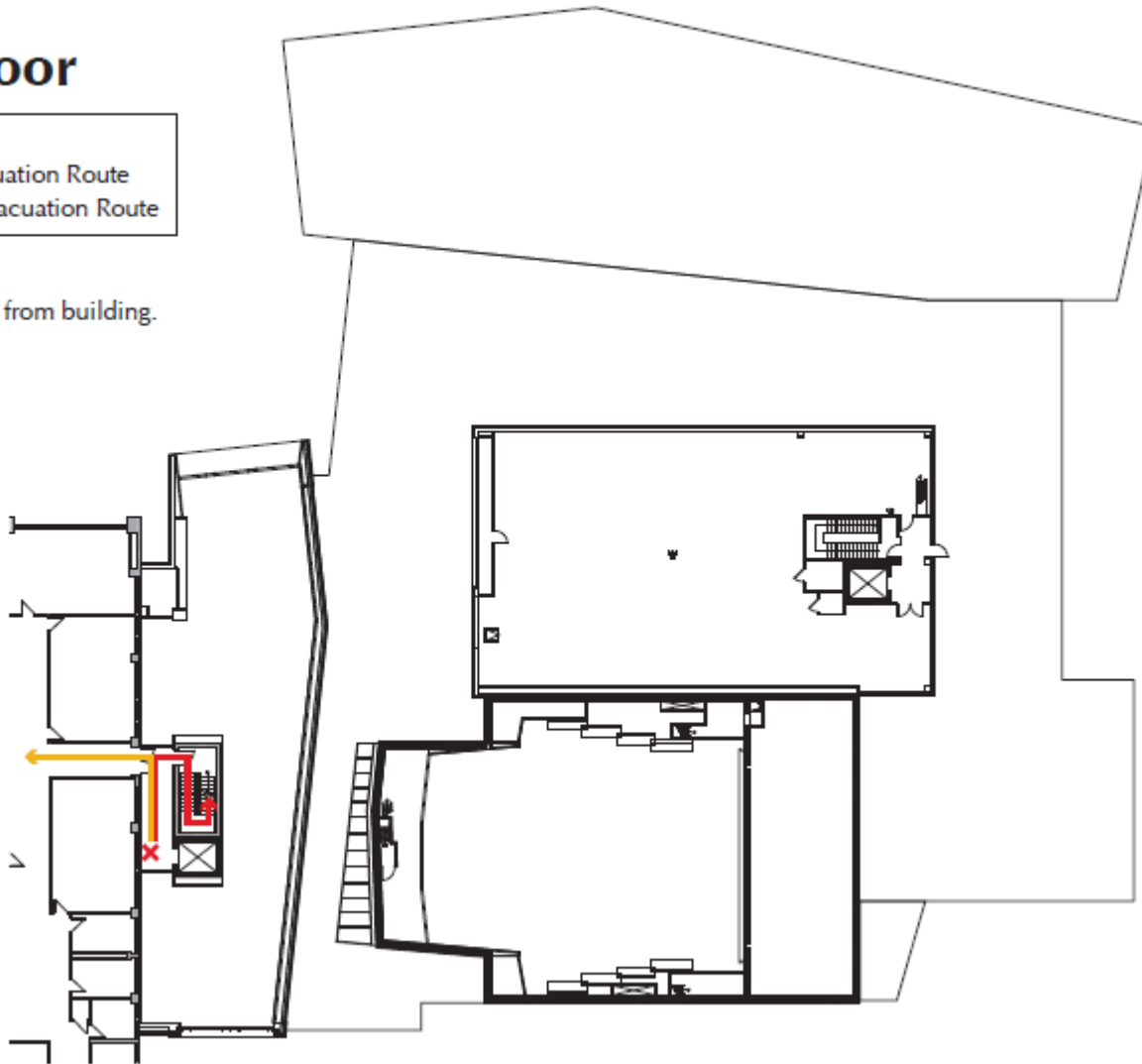


Student Center Evacuation Map

Third Floor

- ✗ You Are Here
- ➔ Primary Evacuation Route
- ➔ Secondary Evacuation Route

Exit building.
Move 50 feet away from building.

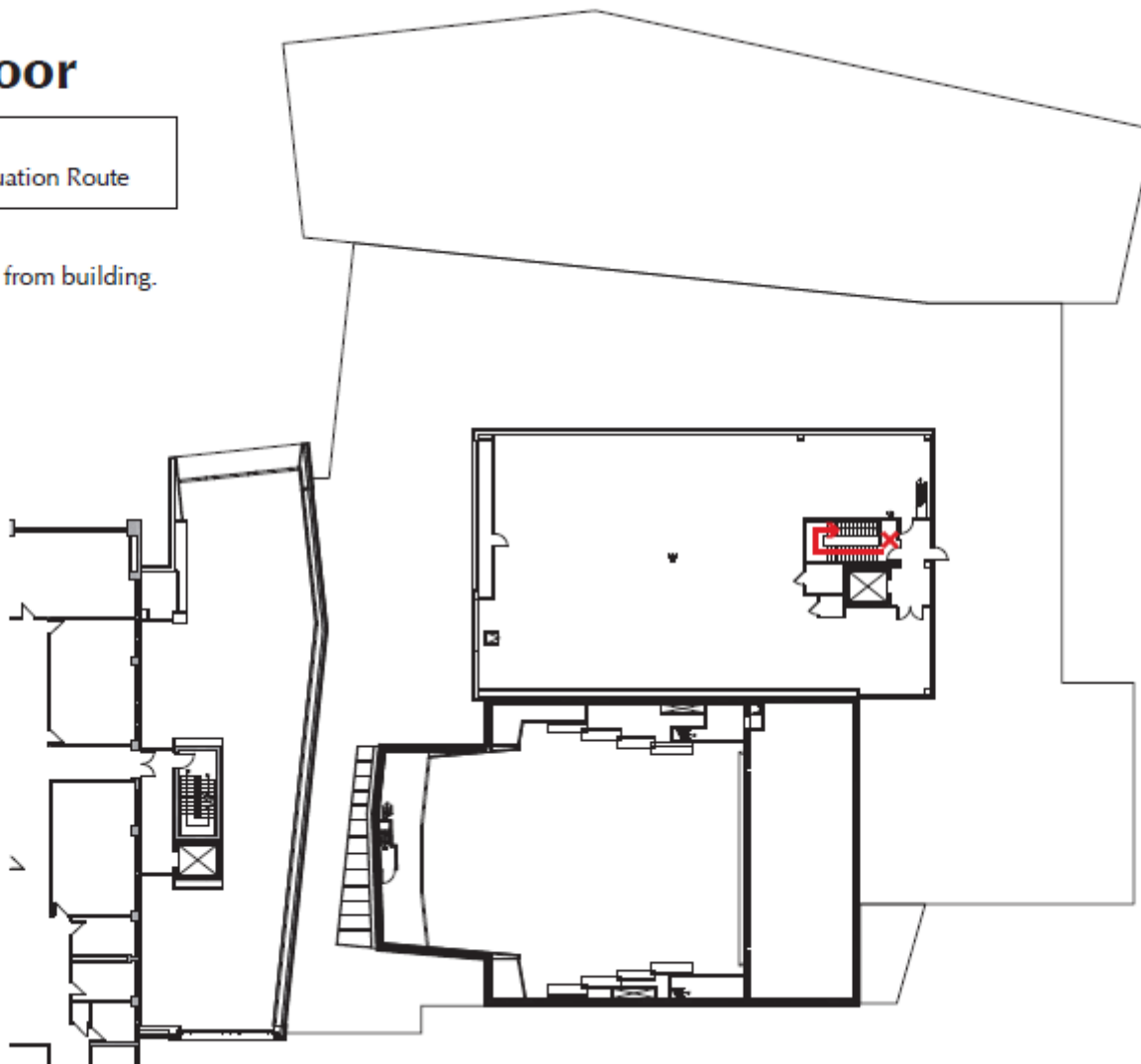


Student Center Evacuation Map

Third Floor

- ✘ You Are Here
- ➔ Primary Evacuation Route

Exit building.
Move 50 feet away from building.

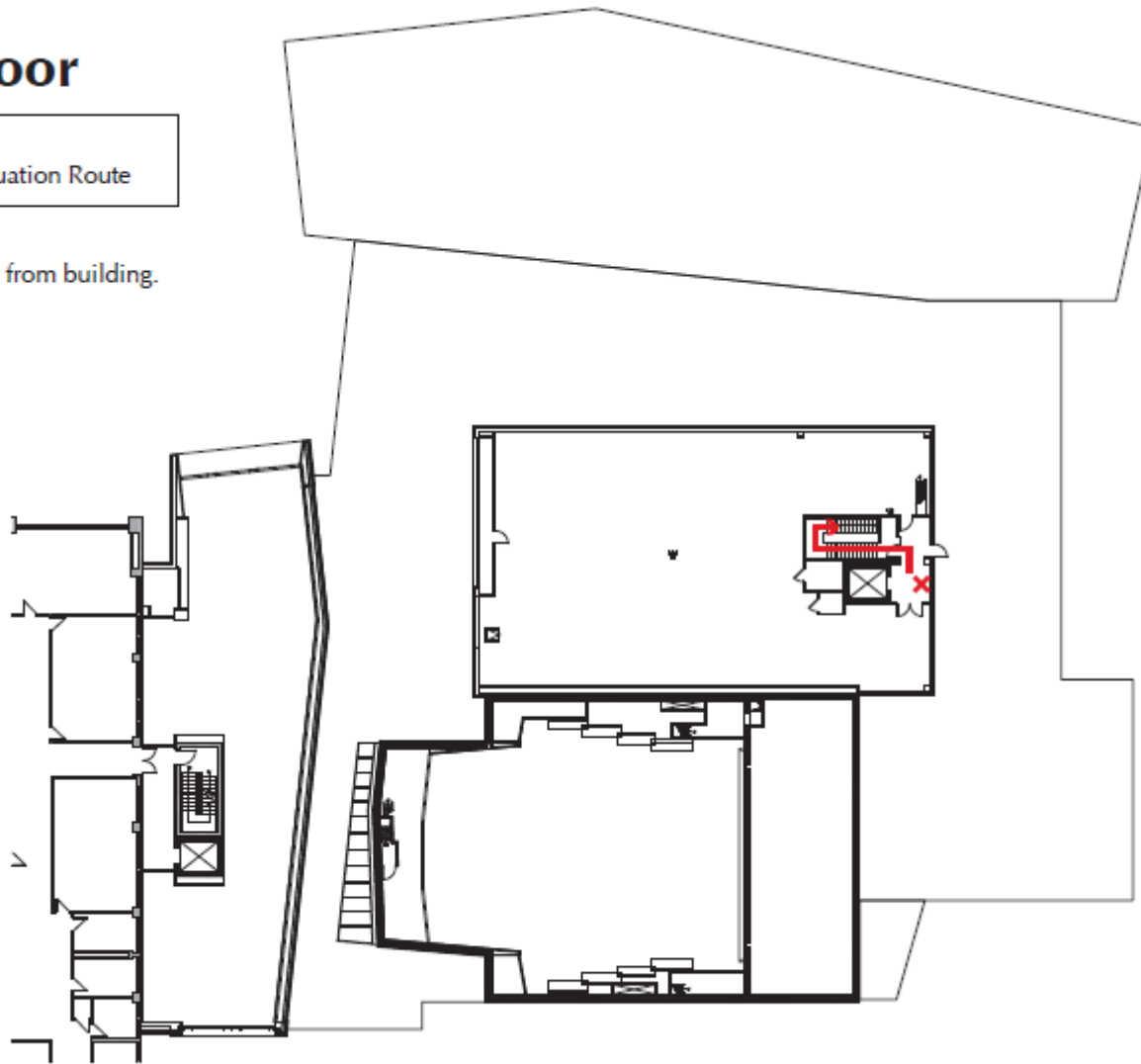


Student Center Evacuation Map

Third Floor

- ✘ You Are Here
- ➔ Primary Evacuation Route

Exit building.
Move 50 feet away from building.

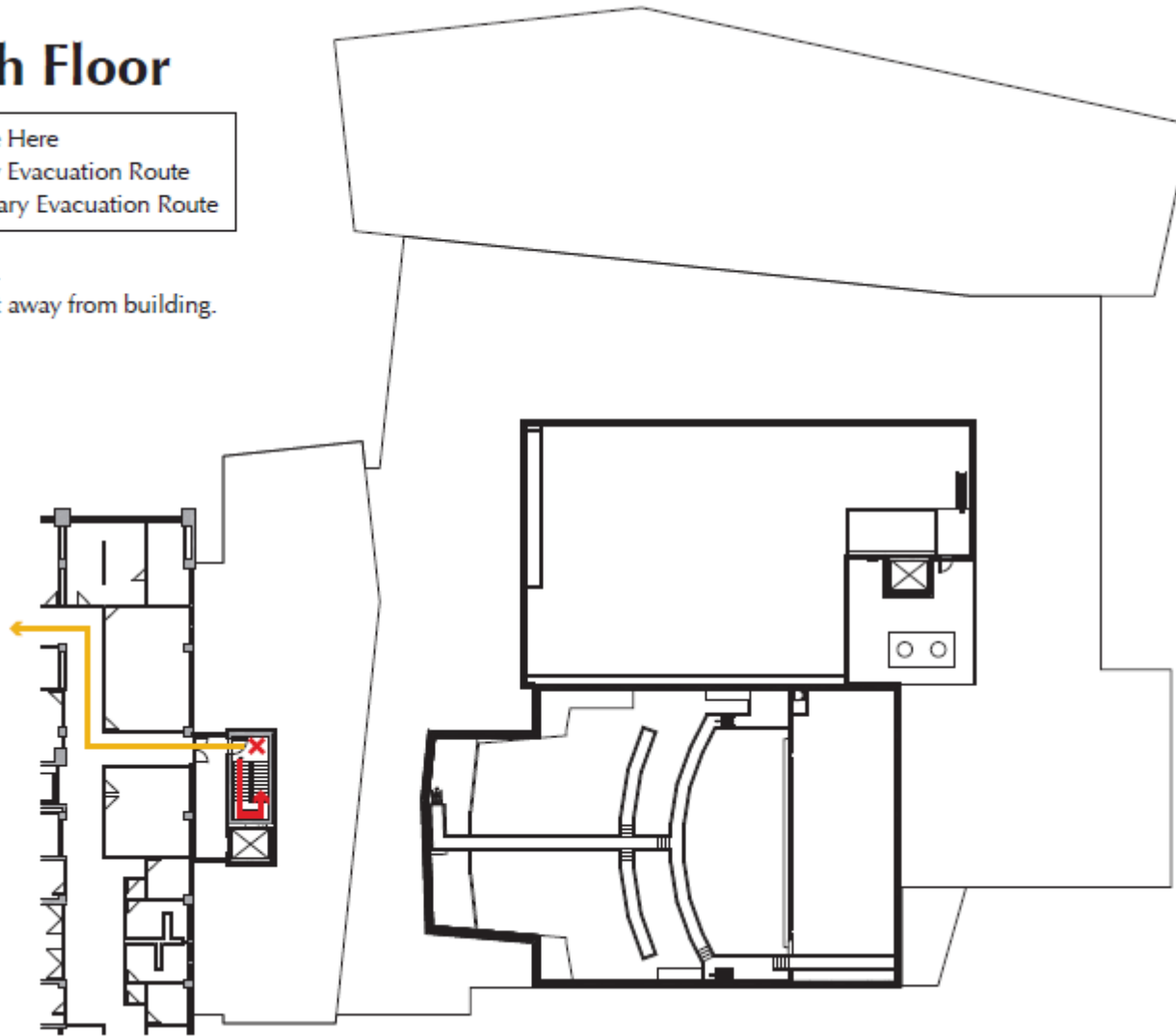


Student Center Evacuation Map

Fourth Floor

- ✘ You Are Here
- ➔ Primary Evacuation Route
- ➔ Secondary Evacuation Route

Exit building.
Move 50 feet away from building.

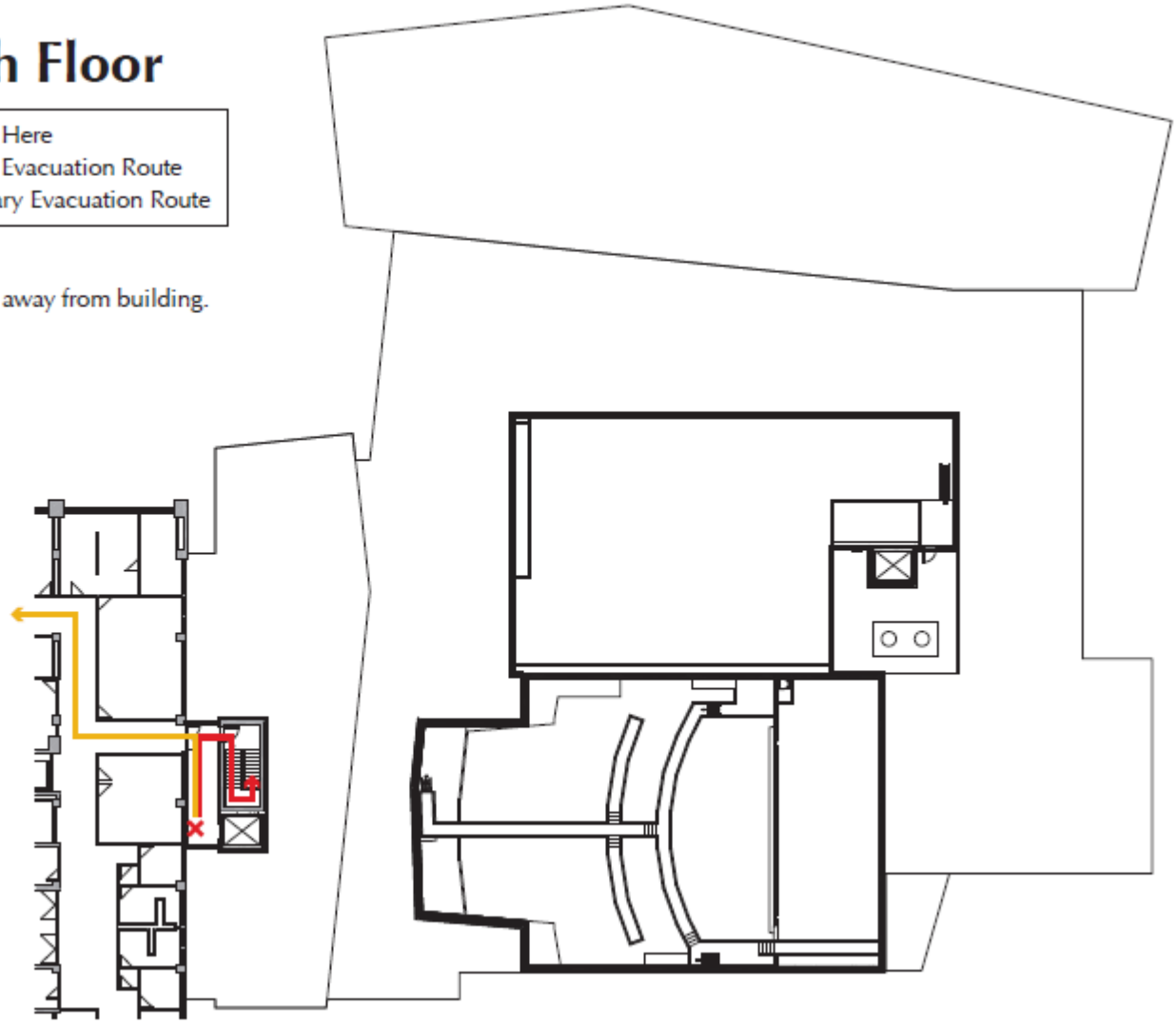


Student Center Evacuation Map

Fourth Floor

- ✘ You Are Here
- ➔ Primary Evacuation Route
- ➡ Secondary Evacuation Route

Exit building.
Move 50 feet away from building.



11.4. Areas of Refuge

In an emergency requiring building evacuation, people with mobility or visual impairment issues may not be able to evacuate without help. There are designated areas of refuge that provide protection where individuals with mobility issues may wait until assistance is available from emergency responders.

Areas of Refuge at FLCC are located in the following areas:

- Second floor near the main elevator
- Third floor near the main elevator
- Fourth floor near the main elevator
- Second-floor Library near the outside stairwell
- Third-floor Library near the outside stairwell

Individuals should wait in the designated area of refuge away from the path of traffic. Emergency responders will respond to the areas of refuge to assist with evacuation. If the hazard becomes life-threatening before emergency responders arrive, move immediately into the stairwell and close all doors. If you are unable to respond to the nearest area of refuge or if you have to retreat to a different location, make sure you contact 911.

Buddy System

During emergencies, people with mobility or visual impairment issues may need assistance evacuating a building. If there is someone who has mobility restrictions, ask them if they need help. Classmates may use the buddy system when evacuating the building. A buddy can assist by guiding an individual to a stairwell, waiting until a clear passage is established, and helping them down the stairs.

Elevators

Elevators should not be used during an emergency. Individuals unable to travel stairs should move to an area of refuge and wait for emergency responders.

Questions

If you have questions, please email disabilityservices@fcc.edu or call (585) 785-1392. Your safety is our priority. Look for the Emergency Evacuation Routes and Areas of Refuge posted throughout the College, and as always, call 911 if you need assistance.

Areas of Refuge 2nd Floor Main Building



Areas of Refuge 3rd Floor Main Building



Areas of Refuge 4th Floor Main Building



FOURTH FLOOR

- Honeoye Wing
- Canandaigua Wing
- Seneca Wing
- Keuka Wing
- Elevator
- Library
- Gymnasium
- Sidewalk
- Stairs

Areas of Refuge
Canandaigua Wing, main stairwell

11.5. Assembly Areas

